

Welcome to norsu cabin.
This book contains
everything you need to
know regarding your stay
in this beautiful home in
the Macedon ranges.

The kettle boils,
the fire crackles,
and light rain
gently dances
on the tin roof.

Welcome to our cabin. We're so delighted
to have you stay.

We have renovated and styled this space
with so much love and we truly hope you
enjoy your stay in our cosy norsu retreat.

Nat & Kristy xx





Wi-Fi

Network name: NetComm 4914 Password: Ducirefipi

Check-out time is 10am

By all means get in touch about variations and where possible, we'll accommodate your requests.

Noise Levels

We have beautiful neighbours and ask you to please keep noise levels down after 10pm.

No Smoking

Cigarettes and vapes are not permitted indoors. Thank you for understanding.

Tank Water

Please note that our property relies on tank water. Feel free to enjoy its purity, and kindly use water mindfully during your stay.

Septic System

Be mindful that our cabin uses a septic waste system and therefore only use septic-friendly products can be disposed of down drains and toilets (no chemicals, toilet paper only etc).





Our Garden is Your Garden

Feel free to indulge in the bounty of our garden. Help yourself to the fresh produce for a taste of homegrown goodness during your stay. A little hunt around the gardens and you'll discover a range of herbs, strawberries, plums, lemons and more.

A Heads-up on Mosquitoes and Bugs

Embrace the serenity of nature, but keep in mind our buzzing companions — mosquitoes and insects are part of the country experience. Fear not as we've got you covered with complimentary mosquito coils, Aerogard and insect spray, ensuring your stay is as comfortable as it is immersed in the beauty of the great outdoors (stored under the kitchen sink). Got a bite? There's Stingose in the first aid kit too.

Streaming Services

Snuggle up with a movie by simply logging into your own streaming accounts via the app menu on the TV.

Safety

Your safety is paramount and something we take seriously, and as such please take extra care on the staircase.

Keep an eye on your little adventurers when they're playing outside on the equipment. We suggest shoes on at all times.

Bushfire Management Plan

A comprehensive bushfire management plan has been prepared can be found in the entertainment unit below the TV.

Washer/Dryer

Washing capsules can be found in the cupboard next to the machine. Note that our machine is a washer/dryer and there is also a clothes line at the rear of the property.

Bins

Please note that NO GLASS can be disposed of in the recycle bin. Please use the purple lid bin for glass. Red is for general waste, yellow for recycling and green for garden and household food waste.

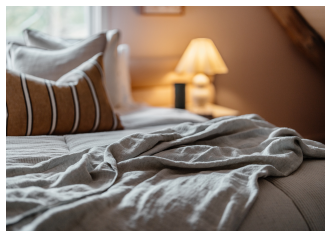


Download the
Bushfire
Management Plan



Amenities

Included in the Cabin for your enjoyment and convenience you'll discover little extra touches to make your escape an experience to remember.



Bed Linen

Need extras? You'll find blankets in the bedroom cupboards. Love it? You can buy it all for home. Keep reading!



Towels

You'll find luxurious Aura bath towels in the bathrooms. Feel free to warm them up in the dryer!



Soaps

Enjoy our beautiful Ena products made with 100% genuine essential oils (we freshly refill the bottles after your stay).



Candles and Room Spray

You'll fall in love with our custom scent Grace and James candle and room spray - yours to enjoy with our compliments.



Cocktail Bar

Indulge and make the most of this space - you're in a great part of the world to sample the local offerings.



Outdoor Bath

For the ultimate bathing experience under the stars, make the most of the decadent outdoor bath.



Firepits

Enjoy this country air and stay warm outdoors with our firepits. Please ensure your fire is completely extinguished when done.



Speaker

Connect your device to the Bang and Olufsen bluetooth speaker - we've even made a Cabin playlist for you.

Download the Cabin Spotify Playlist





A Stone's Throw

You don't have to venture far to find some of the finest coffee, cuisine and essentials in the Macedon Ranges - in fact it's just around the corner!

In Victoria Street Macedon you'll find of some of our local favourites including:

Mr Macedon

Come for the coffee and stay for the irresistible breakfast and lunch fare. It's a bit of a local icon this place and for good reason. 23 Victoria St, Macedon

Harvest & Soul Providore & Catering

We guarantee you won't leave empty handed from here. Grab anything from an easy to heat scrumptious dinner to goodies for a picnic or one of their soups or salads. Tell Abbey hi from us! 29 Victoria St, Macedon

IGA Xpress + Liquor

Open 8am-7:30pm seven days a week for grabbing any essentials. 20 Victoria Street, Macedon

Electric Vehicle Charging Station

There is an Evie Charging Station on the corner of Smith and Victoria St, Macedon

Eat and Drink

Restaurants

Kuzu Izakaya

If you love Japanese food then this place simply cannot be missed! Kuzu is the place that famous entertainers eat at when in town to perform at nearby Hanging Rock and it was recently “hatted” by the Good Food Guide.

Book in advance! (03) 4417 7804

5pm - Late 42D Anslow St, Woodend.

UUMM at Mount Macedon Winery

Think rustic, seasonal dishes paired with handcrafted drinks and panoramic views through large windows. Or, opt for a relaxed dining experience at the Cellar Door.

Book ahead - lunch Thursday to Sunday and dinner Friday & Saturday from 5.30pm.

433 Bawden Rd, Woodend VIC 3442 (03) 5427 4172

Holgate Brewhouse

Escape at a quaint countryside pub which is also one of Victoria's oldest craft breweries. On offer are exquisite restaurant-style dishes paired with locally brewed, award-winning craft beer, served fresh from their taps. A classic childrens' menu is also available. Opening hours vary - check before you visit.

79 High St, Woodend (03) 5427 2510

Cellar Doors

We're so lucky to have some of the country's best cool-climate wines grown and made right here in this region. Take your pick of local wineries and cellar doors to sample - here's just a couple of our favourites!

Mount Towrong

Incredible local wines, rustic Italian food and breathtaking views. It's all this and more at Mount Towrong Vineyard, a gorgeous little family owned and operated vineyard. We recommend you BYO kid's food. 4 Taylors Rd, Mount Macedon - 0488 155 088

Curly Flat

Regarded as one of Australia's finest producers of Pinot Noir, Chardonnay & Pinot Gris, you can book a tasting at this stunning Cellar Door. 263 Collivers Rd, Lancefield - (03) 5429 1956

Hanging Rock Winery

You'll find complimentary wine tastings and cheese platters available to enjoy on the scenic grounds (there are picnic tables or you can bring your own picnic blanket). Pop it on your list! 88 Jim Rd, Newham - (03) 5427 0542



UUMM

Take a wander or a hike

You'll find an abundance of trails nearby to explore starting with simple and short 25 minute strolls up to a seven-hour 30km loop for the true enthusiasts. Here's some of the top picks.

Mount Macedon Regional Park

The highest peak in the Macedon Ranges at 1011m with the best views. There is a steep 500m ascent to reach the viewing platform but it's worth it! You don't have to walk to the top though - a popular walk is the Camel's Hump to Days Picnic Ground route, which is 1.8km, 30-40 minutes one way.

Hanging Rock

Make the most of your day at Hanging Rock by exploring more than just the famous Pinnacle Walk. The reserve offers a variety of pram-friendly walking paths that provide up-close encounters with the rich flora and fauna. Consider packing a picnic and immersing yourself in a day of discovery, from the intriguing rock formations to the Discovery Centre, which delves into the area's history and cultural significance. Down at the base, a convenient picnic area awaits, equipped with BBQs. There's also the nearby Hanging Rock Café for an easy dining option. While you're here, try your hand at trout fishing in the dam (BYO fishing license) and don't forget to keep an eye out for the friendly local wildlife including koalas, kangaroos, wallabies, and echidnas.

Trentham Falls

Pop over to Trentham Scenic Reserve Road to visit Trentham Falls Waterfall on the Coliban River. A natural oasis picnic spot and a breathtaking area for photos – especially after some rain. One of Victoria's longest single-drop waterfalls, the waters cascade over ancient basalt columns, with a mesmerising drop of approximately 32 meters.

Open Gardens

Concealed within the grand walls of Mount Macedon's impressive mansions lie some of Victoria's most exquisite gardens, many of which hold National Trust listings. Among these treasures, the iconic Forest Glade on Mount Macedon welcomes visitors year-round, and grab a bite nearby at Top of the Range Tea Rooms or the Trading Post.



Day Trips

While you're here, why not visit the charming historic towns in the region such as Kyneton, Woodend and Daylesford. These towns offer a mix of quaint shops, art galleries, cafes and local markets. Take a leisurely stroll through their streets, soak up the atmosphere, and discover unique local wares. If you're after a complete day trip itinerary, check out visitmacedonranges.com website for the perfect collection of brilliant daytrips. Here's a little snippet of what to expect from these enchanting towns:

Daylesford and Hepburn Springs

Daylesford and Hepburn Springs are renowned for their mineral springs, spa retreats, and natural beauty. Explore the vibrant town of Daylesford, browse through art galleries, indulge in a relaxing spa treatment, or visit the famous Hepburn Bathhouse & Spa.

Woodend

Take a short trip to Woodend, a charming town with boutique shops, art galleries and cafes. Explore the local markets, go for a leisurely walk along Five Mile Creek or visit the Woodend Children's Park for family-friendly fun.

Kyneton

Another nearby town worth visiting is Kyneton, known for its historic buildings, galleries, and gourmet food scene. Stroll along the main street, explore the local shops and antique stores and enjoy a meal at one of the many acclaimed restaurants.



Pizza Verde

GENERAL STORE

PLEASURES
ON PIPER
GIFTS



Meticulously designed, lovingly styled

Every detail of [norsu Cabin](#) was created to brief by the Interior Designers at norsu Design. Specialists in home renovations, new builds and home styling, the team helped tweak the floorplan, managed the joinery, selected our fixtures and finishes and chose the furniture and styling wares you see at the Cabin.

We've shared our renovation journey on the website with in-depth styling notes and tricks to tackling your own project. If you fall in love with anything at the Cabin, the best news is that we have detailed exactly how to get the look and where to get it from and using the code **NORSUCABIN** on the [norsu Interiors website](#), you'll receive an exclusive 10% discount on any purchases.

Read the
reno journey



Shop the
Cabin looks



norsu
DESIGN



Meet Your Hosts

From a chance meeting and instant bond at mother's group to joining forces and opening homewares and art store [norsu Interiors](#) together in 2013, it's fair to say, Kristy Sadlier and Nat Wheeler are two unstoppable Scandi-loving powerhouses.

No strangers to renovations with their own Interior Design business norsu Design managing projects across Australia, the duo have showcased many successful renovations, sharing their style tips and expert know-how with followers.

Forever dreaming big, they imagined a place that embodied the norsu aesthetic, showcased a renovation, and connected with people on a whole new level.

It's with full hearts and a welcome embrace that Kristy and Nat welcome you to norsu Cabin, an entirely immersive norsu-lifestyle experience that's just down the road, but feels a world away.





GLOBEWEST

Designed for designers,
GlobeWest furniture was our
must-have furniture for norsu
Cabin.

This curated collection of our
favourite pieces has been styled
in our signature norsu-aesthetic
and best of all, if you see
something you love for your own
home, you can shop it right here
from the comfort of the Cabin
lounge!

To shop the GlobeWest edit,
simply scan the below QR code.





Designer

B A T H W A R E

A boutique Australian, family-owned and local business, Designer Bathware were the magicians to bring to life our Cabin bathrooms, kitchen and laundry - not to mention the incredible outdoor bath. The loveliest and most helpful team imaginable, they're our one-stop shop for all the best brands locally and from across the globe.

Wholeheartedly recommend [Designer Bathware](#) and you can view their website via the below QR code.





Get the Lounge Room Look

Scan the code below or visit our [website](#) for the full lounge edit.



Marcia Priestley Limited Edition Fine Art Canvas Print - Sunday



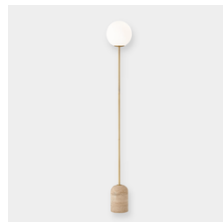
Globe West Bonnie Occasional Chair, Barley Boucle



norsuHOME Marble Coasters - Set of 4



Globe West Oberon Crescent Buffet



Soren Floor Lamp - Travertine



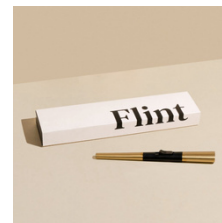
Norsu Cabin x Robert Gordon Cylinder Light



Baya Karaka Floor Rug - Merino



Black Blaze Curl Curl Candle - Butter



Flint - USB Candle Lighter - Brass



Shop the look room by room:



Enter code NORSUCABIN for 10% off

Get the Dining Room Look

Scan the code below or visit the [website](#) for the full dining edit.



Shop the look room by room:



Enter code NORSUCABIN for 10% off



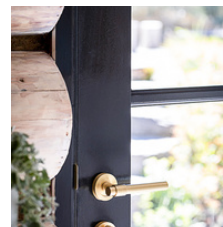
Globe West Pinto
Chair



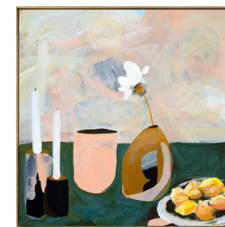
Paola & Joy Cora
Floor Lamp



Perini Tiles - Pez
Rosetta



Iver Life, Helensiki
Brushed Brass



Prudence Demarchi
- Still as Life



Globe West Granada
Scoop Dining Chair



Fireplace - Nectre,
Form 2



Curtains - Warwick
Linesta Alabaster



Baya Mornington
Floor Rug - Teak





Get the Kitchen Look

Scan the code below or visit our [website](#) for the full kitchen edit.



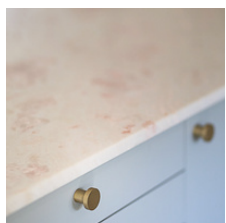
norsu Cabin x Grace
& James Room Spray



Paola & Joy Evie
Table Lamp - Blush



Globe West Laylah
Loop Barstool,
Wheat/Almond Milk



CDK Stone, London
Pink Marble



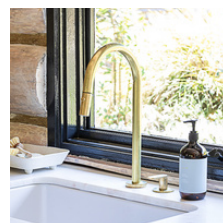
L&M Home Mona
Curve Planter - Chalk



Marcia Priestley
- Citron



Prudence Demarchi
- Sunseeking



Sussex Taps,
Tumbled Brass



Laminex, AbsoluteMatte
Spinifex



Shop the look room by room:



Enter code NORSUCABIN for 10% off

Get the Downstairs Bedroom Look

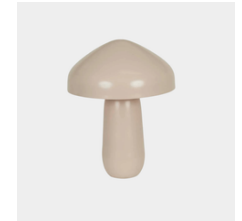
Scan the code below or visit our [website](#) for the full bedroom edit.



norsuHOME Cushion,
Lexus Duck Egg with Blue
Leather Piping



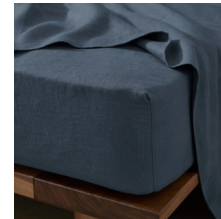
Baya Sorrento Throw
- Cloudburst



Perini Tiles - Pez
Rosetta



Marcia Priestley
- Tree Change II



Weave Home Ravello
Fitted Sheet - Denim



A Tree in the House
by Annabelle Hickson

Shop the look room by room:



Enter code NORSUCABIN for 10% off



Eadie Lifestyle Marina
Reversible Bedcover,
White/Ink Stripe



Globe West Artie Open
Bedside, Powder Blue



Paola & Joy Amara
Halo Vase

Get the Outdoors Look

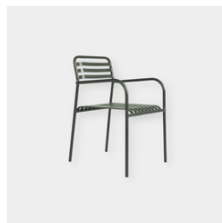
Scan the code below or visit the [website](#) for the full outdoors edit.



Robert Gordon Pearl
Wall Sconce, Stone



Globe West Petra
Oval Dining Table



Globe West Pier
Breeze Dining Arm
Chair, Green



GlobeWest Mauritius
Wing Occasional Chair
White



BAYA Hampton Cushion,
Cloudburst



L&M Home Mona Curve
Planter - Chalk



Shop the look room by room:



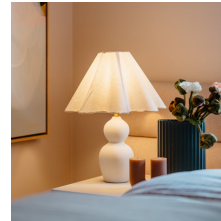
Enter code NORSUCABIN for 10% off



Globe West Livorno
Round Side Table
Grey Speckle

Get the Main Bedroom Look

Scan the code below or visit the [website](#) for the full bedroom edit.



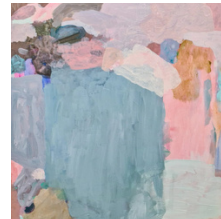
Paola & Joy Mila
Table Lamp



Finding Joy by
Prudence Demarchi



norsuHOME Cushion,
Lexus Rosewater with
Blush Leather Piping



Pretty Places by
Vanni



Marmoset Found Ripple
Oval Vase, Medium, Moss



Eadie Lifestyle Marina
Quilted Bedcover,
White/Natural Stripe

Shop the look room by room:



Enter code NORSUCABIN for 10% off



Eadie Lifestyle Marina
Cushion,
White/Pistachio Stripe



Globe West Artie Wave
Bedside, Bone



Globe West Eleanor
Occasional Chair,
Blush Sheepskin

Get the Kids' Bedroom Look

Scan the code below or visit the [website](#) for the full outdoors edit.



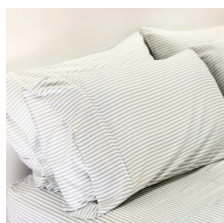
Mustard Made Locker
- The Lowdown Chalk



Robert Gordon Bowl
Sconce Light, Olive



Eadie Lifestyle
Gambit Cushion -
White/Nutmeg



Mulberry Threads
Bamboo Pillowslip and
sheet set, Fog Stripe



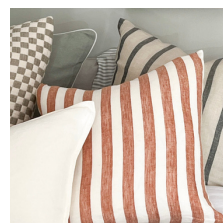
Summer Rain by Vanni



Little Drop Sunrise Toy



norsuHOME Round
Cushion, Caramel
Velvet



Eadie Lifestyle Santi Linen
Cushion, White/Nutmeg
Stripe



Easton Canopy Table
Lamp - Taupe



Shop the look room by room:



Enter code NORSUCABIN for 10% off

Get the Bathroom Look

Scan the code below or visit the [website](#) for the bathroom edit.



Robert Gordon Dish
Wall Sconce, Rose
Quartz



norsu Cabin x Ena -
Shampoo & Conditioner



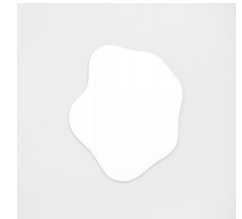
Paros Bath Towel -
Limestone



Paros Hand Towel - Pink
Clay



Robert Gordon Clay 350
Round Hand Basin, Coast



Middle of Nowhere
Rockpool Mirror, Bright
White

Shop the look room by room:



Enter code NORSUCABIN for 10% off



norsu Cabin x Grace &
James Room Spray
and Candle



Maritime by Marcia
Priestley



Paros Bath Mat -
Pink Clay



Emergencies

Police, Fire, Ambulance	000
State Emergency Services (SES)—floods or storms	132 500
VicEmergency Hotline	1800 226 226
Wildlife Victoria—to report an injured animal	03 8400 7300
Poisons Information Centre (VIC)	13 11 26

Useful

Ranges Medical	(03) 8373 5420
----------------	----------------

Discover Daylesford Property Management

Mon-Thurs 10-5, Fri 10-7, Sat/Sun 11-4	(03) 7068 5840
After Hours / Emergency	(03) 5312 2802

If no answer on the numbers above, please leave a message when instructed and your call will be prioritised.

We understand accidents can happen, so please report any breakages/damage to the team at your earliest convenience so we can make good on any concerns, and rectify any issues prior to departure.

Discover Daylesford: 30 Albert St, Daylesford VIC 3460
e: stay@theweekendescape.com.au



Follow us

Instagram: [@norsucabin](https://www.instagram.com/norsucabin)
Web: norsucabin.com.au